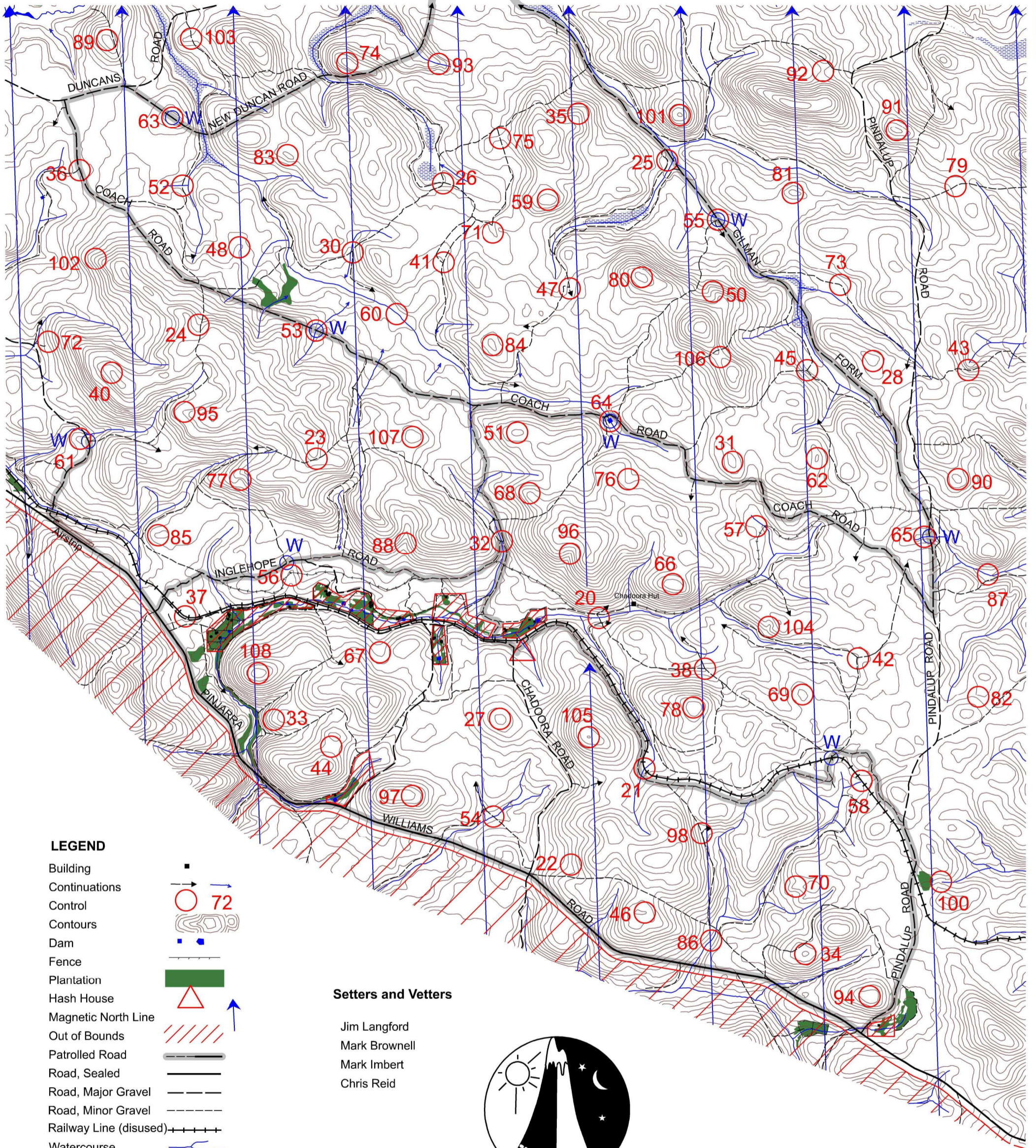


Over the Watershed Rogaine

WARA Winter 24 Hour Rogaine - 18 & 19 June 2011

Western Australian Rogaining Association, PO BOX 1201, Subiaco WA 6904



LEGEND

- Building
- Continuations
- Control
- Contours
- Dam
- Fence
- Plantation
- Hash House
- Magnetic North Line
- Out of Bounds
- Patrolled Road
- Road, Sealed
- Road, Major Gravel
- Road, Minor Gravel
- Railway Line (disused)
- Watercourse
- Water Drop
- Bibbulmun Track (footpath only)

Setters and Vettors

Jim Langford
 Mark Brownell
 Mark Imbert
 Chris Reid



Thanks to:

Elisa Skillen of DEC

SCALE 1:50,000, 5 metre contour interval



Over the Watershed Rogaine - 18 and 19 June 2011

No	Description
20	The track watercourse crossing
21	The embankment
22	A gravel pit, northern edge
23	The watershed
24	The gully
25	The track bend
26	The track junction
27	The knoll
28	The knoll
30	The track junction
31	The knoll
32	The track creek crossing
33	The spur
34	The knoll
35	The wooded spur
36	The track junction, 50m @ 80 degrees
37	The railway line
38	The track junction
40	The knoll, north west end
41	The track junction
42	The track junction
43	The track
44	The saddle, broad
45	The track junction, 120m @ 220 degrees
46	The knoll, east end
47	The track junction
48	The spur
50	The spur
51	The knoll

No	Description
52	The track watercourse crossing
53	The watercourse road crossing
54	The watercourse, on the track
55	The road/track junction
56	The gully
57	A disused track
58	The northern rail
59	The knoll
60	The watercourse
61	The spur
62	The knoll
63	The knoll, 100m @ 210 degrees
64	The dam, south side (Caution dam)
65	The gully
66	The knoll
67	The gully
68	The spur
69	The knoll
70	The spur
71	The gully
72	A gravel pit, northern part
73	The track bend
74	The knoll
75	The saddle, on the track
76	The gully
77	The gully
78	The knoll
79	The track
80	The knoll

No	Description
81	The knoll
82	The saddle
83	The knoll
84	The knoll
85	The knoll, western end
86	The watercourse
87	The watercourse
88	The gully, broad
89	The knoll
90	The knoll
91	The knoll
92	The saddle
93	The watercourse on a track
94	The knoll
95	The spur
96	The gully
97	The knoll, east end
98	The track junction
100	The gully next to the old railway embankment
101	The knoll
102	The spur
103	The spur, on the track
104	The gully
105	The summit
106	The saddle
107	The knoll
108	The knoll

Event Information
Start: 12:00 Noon Saturday Finish: 12:00 Noon Sunday
Sunset: 17:17 Sunrise: 07:17
Moonrise: 19:52 Moonset: 09:42
Late Penalty: 10 points per minute or part minute You will be LATE (no points) if later than 12:30 Noon Sunday
The Schools Championship finishes at 6:00pm Saturday.
Controls used: 85 Total Points: 5120
Water drops at: 53, 55, 63, 64 Water also near controls 56, 58, 61, 65

If a team member becomes sick or injured, please make your way to a water drop or a patrolled road which are indicated on the map.